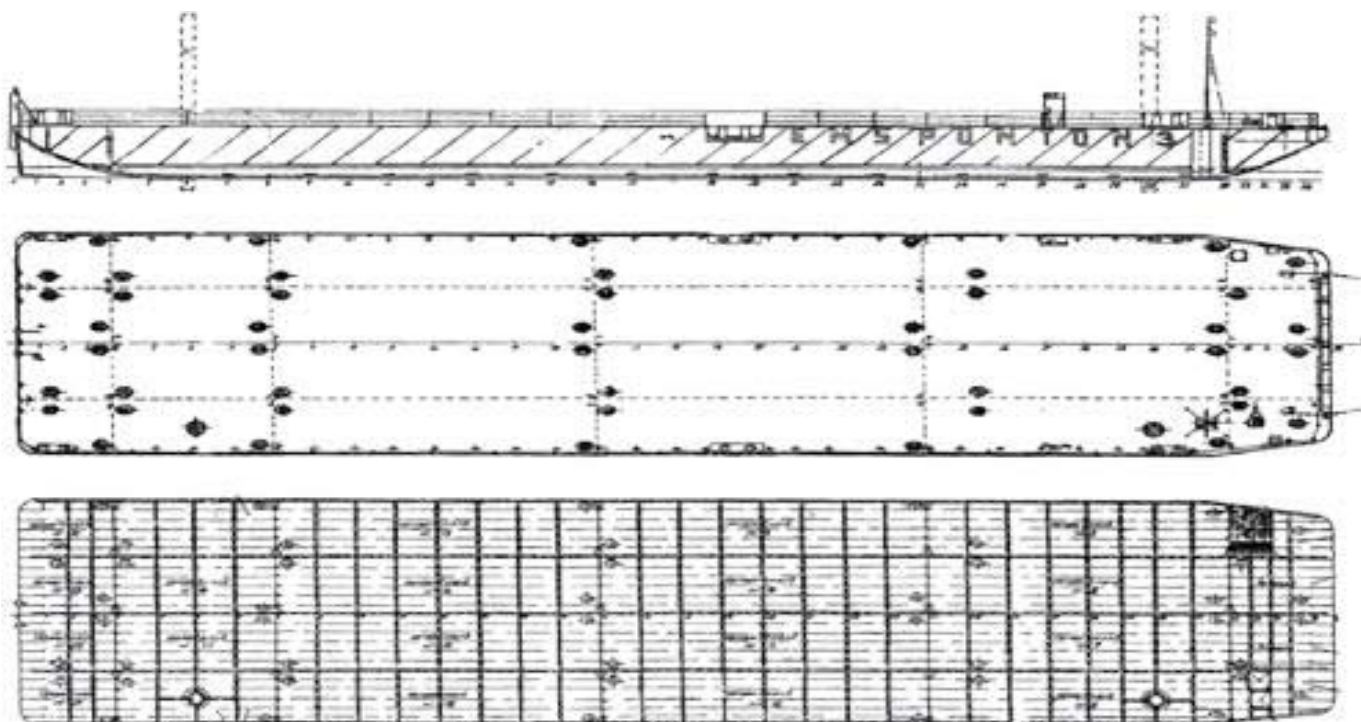




# EMS OFFSHORE SERVICE



## EMS PONTON 3



# EMS PONTON 3

## PRINCIPAL DIMENSIONS:

Length over all	:	65,28 m
Length	:	62,40 m
Beam over all	:	15,03 m
Depth moulded	:	3,30 m
Ligth draft	:	0,65 m
Loaded draft	:	2,46 m
Built	:	2002 Russia
Class	:	G. L. + 100 A5 deep sea
Tonnage	:	798 GT / 239 NT

## CAPACITIES:

Deadweight	:	1.700 to
Deckload	:	8 to/ m <sup>2</sup>
Wheel load	:	12 to at 10 bar
Point loads	:	60 to at webframes 80 to at bulkheads 200 to at bulkhead cross

2 spud trunks at Stb side forward & aft. (with covers)  
2 spuds, diameter 700 mm, length: 18,00 m  
4 Ro Ro ramps: L: 12,00 m, B: 4 x 1,5 m = 6 m  
In total 70 lashing eyes, SWL 49 tons

## ARRANGEMENT & FORM:

Bow	:	Raked, Ro Ro connection
Stern	:	Raked with 2 skegs, 2 pushpipes aft.
Bulkheads	:	3 longitudinal, 5 transverse
In total 24 compartments of which 23 can be used for ballast water.		
Each compartment with 2 covers, deckplug & sounding pipe.		
One compartment for chainlocker (Stb)		
One compartment for storage (PS)		

Deck completely flush.  
Removable railing around.  
Removable signal mast and anchor winch.  
Position & stern lights: Gas

## MOORING & TOWING:

Anchor	:	H.H.P. 240 kg
Anchor chain	:	148 m, 20,5 mm
Anchor winch	:	Manual / with warping head
Towing arr.	:	2 smith brackets & fairleads
Bridle	:	2 x 12 m steel wire
Bollards	:	Double bollards fore & aft.
Double bollards flush at fr. 19/20		